

# DATA AND TELECOM CONNECTIVITY SOLUTIONS



**DATA COMM**<sup>TM</sup>  
ELECTRONICS

# DATA AND TELECOM CONNECTIVITY SOLUTIONS

Since 1998, **DataComm Electronics** has been pioneering innovative solutions for structured wiring. Industry-wide, we are known as the manufacturer who listens to customers, delivering the reliable and affordable products needed to boost efficiency, reduce costs and meet the demands of an ever-evolving marketplace. At DataComm, we are passionate about our industry and proud of the products we develop and deliver.

By keeping our designs simple and installer-friendly, DataComm Electronics has become an industry recognized brand name and a leading manufacturer

of data and telecom connectivity solutions. Our latest offering of new, redesigned Cat 6 Jacks and the addition of Cat 5e and Cat 6 Patch Cords are only a small example of our product line that is continuously expanding and improving. We now also offer a complete 25-year Channel System Warranty featuring our connectivity products in conjunction with Honeywell Genesis Cable.

For more information not found in this catalog, and to view our complete line of products, please visit our website at [www.DataCommElectronics.com](http://www.DataCommElectronics.com).

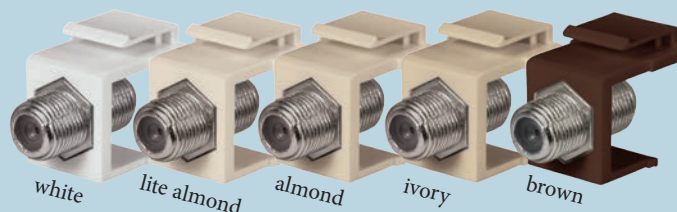
DataComm Electronics, Inc. • 888.223.7977 • [www.DataCommElectronics.com](http://www.DataCommElectronics.com)

**DATA COMM**  
ELECTRONICS

## Keystone Jack F-Connectors

PART #	DESCRIPTION
20-3102-**	1 GHz, AL, BR, IV, LA, WH
20-3202-**	2.4 GHz, AL, BR, IV, LA, WH

- 1 GHz and 2.4 GHz available
- Female-to-female connectors
- Available in 5 colors
- Screw-on front and rear connections for easy termination
- Blue insert easily identifies 2.4 GHz version
- Nickel plated connector



## F-Connector Coax Wall Plates

PART #	DESCRIPTION
32-0011	1 GHz, Ivory
32-0012	1 GHz, White
32-0013	1 GHz, Brown
32-0015	1 GHz, Lite Almond
32-2024-IV	2.4 GHz, Ivory
32-2024-WH	2.4 GHz, White
32-2024-BR	2.4 GHz, Brown
32-2024-LA	2.4 GHz, Lite Almond
32-0031	1 GHz, Dual Coax, Ivory
32-0032	1 GHz, Dual Coax, White
32-0033	1 GHz, Dual Coax, Brown
32-0035	1 GHz, Dual Coax, Lite Almond

\*Also available in a mid-size wall plate\*



- 1 GHz and 2.4 GHz available
- Female-to-female connectors
- Available in 4 colors
- Also available in a mid-size wall plate
- Blue insert easily identifies 2.4 GHz version
- Nickel plated connector

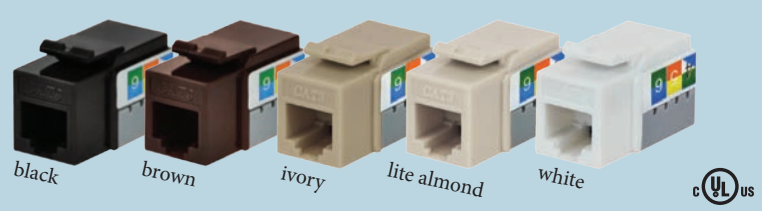




**Cat 3 Voice Grade Jacks**

PART #	DESCRIPTION
20-3423-**	BK, BR, IV, LA, WH

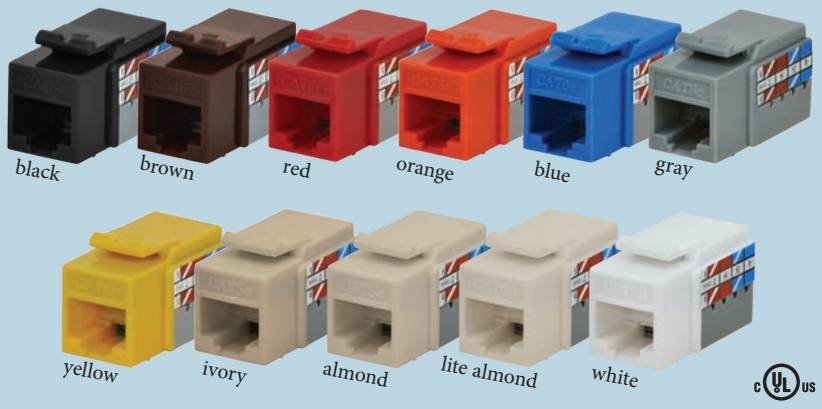
- 6-position, 6-conductor, RJ-11
- Color coded for Cat 3 and station wire
- Offered in 5 colors
- 20-year product warranty



**Cat 5e Data Jacks**

PART #	DESCRIPTION
20-3425-**	AL, BK, BL, BR, GY, IV, LA, OR, RD, WH, YW

- 8-position, 8-conductor, RJ-45
- High performance Cat 5e jacks
- Meets FCC part 68
- Offered in 11 colors
- 25-year Channel System Warranty when terminated with Honeywell Genesis Cable
- 20-year product warranty
- Exceeds TIA/EIA Category 5e standards for high performance data transmission up to 100 MHz

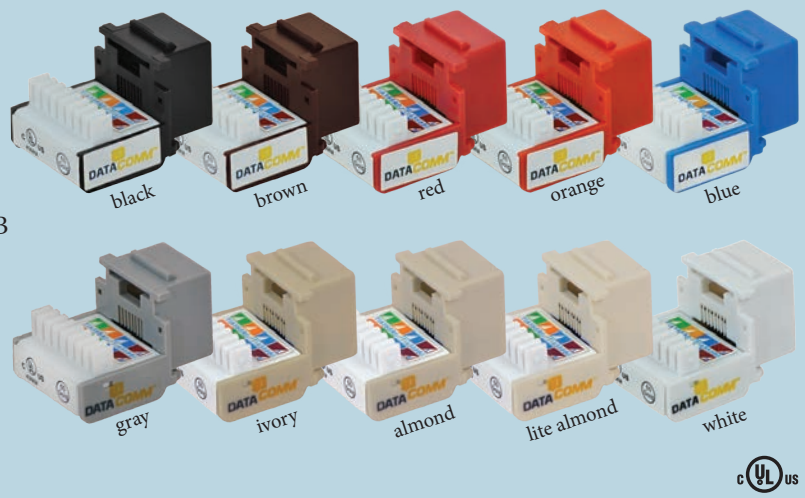


- Designed to with the Fluke JackRapid™ tool.
- Color coded wiring labels for T568A and T568B

**Cat 5e Jacks with rear IDC Termination**

PART #	DESCRIPTION
20-3405-**	AL, BK, BL, BR, GY, IV, LA, OR, RD, WH

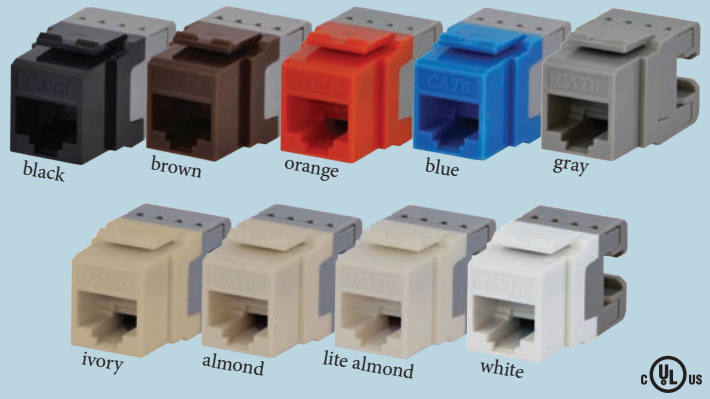
- 8-position, 8-conductor, RJ-45
- Color coded wiring labels for T568A and T568B
- Exceeds TIA/EIA Category 5e standards for high performance data transmission up to 100 MHz
- High performance Cat 5e jacks
- Meets FCC part 68
- Offered in 10 colors



**Cat 6 Jacks with 180° Termination**

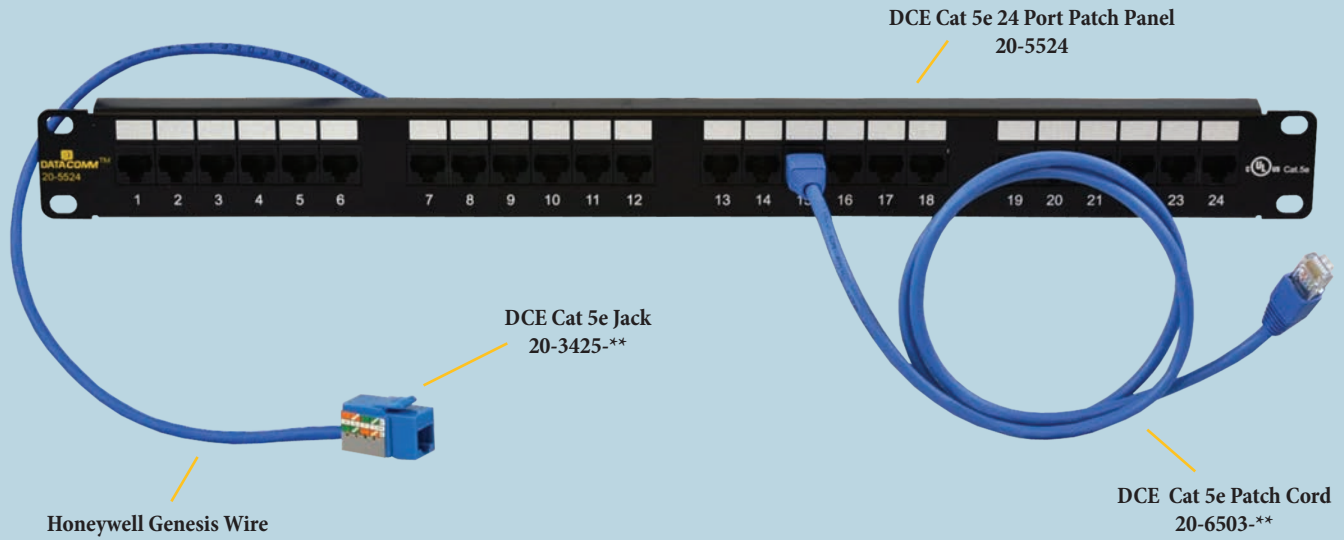
PART #	DESCRIPTION
20-3426-**	AL, BK, BL, BR, GY, IV, LA, OR, WH

- 8-position, 8-conductor, RJ-45
- Exceeds TIA/EIA Category 6 standards for high performance data transmission up to 250 MHz
- Color coded wiring labels for T568A and T568B
- Meets FCC part 68
- 20-year product warranty
- Offered in 9 colors





**DataComm Electronics Announces Our New  
25-Year Channel System Warranty  
in Conjunction with Honeywell Genesis Cable**

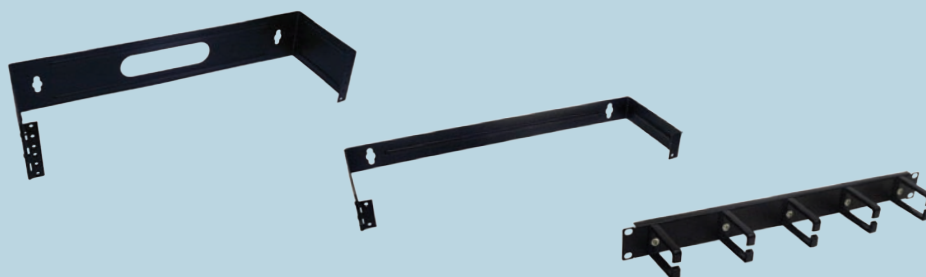


DataComm Electronics, in conjunction with Honeywell Genesis, announces our new 25-Year Cat 5e and Cat 6 Channel System Warranty Program. Ask your DataComm Electronics or Honeywell Genesis Cable Distributor for more details.

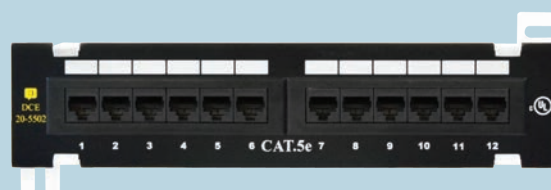
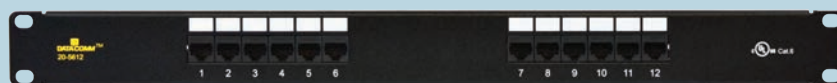
DATACOMM ELECTRONICS WARRANTY PRODUCT NUMBERS:	
<b>Qualified Cat 5e Products:</b>	
Cat 5e Jack: Series 20-3425-**: AL, BK, BL, BR, GY, IV, LA, OR, RD, WH, YW	
Cat 5e Patch Panels: 20-5502, 20-5512, 20-5524 and 20-5548	
<b>Cat 5e Patch Cords:</b>	
1 ft: 20-6501-BL, WH, YW	15 ft: 20-6515-BL, WH, YW
3 ft: 20-6503-BL, WH, YW	25 ft: 20-6525-BL, WH, YW
7 ft: 20-6507-BL, WH, YW	50 ft: 20-6550-BL, WH, YW
<b>Qualified Cat 6 Products:</b>	
Cat 6 Jack : Series 20-3426-**: AL, BK, BL, BR, GY, IV, LA, OR, WH	
Cat 6 Patch Panels: 20-5602, 20-5612, 20-5624 and 20-5648	
<b>Cat 6 Patch Cords:</b>	
1 ft: 20-6601-BL, WH	15 ft: 20-6615-BL, WH, YW
3 ft: 20-6603-BL, WH	25 ft: 20-6625-BL, WH, YW
7 ft: 20-6607-BL, WH	50 ft: 20-6650-BL, WH, YW
QUALIFYING HONEYWELL GENESIS PRODUCT NUMBERS:	
Cat 5e Cable: 5078, 5088, 5090	
Cat 6 Cable: 5092, 5102	

**Wall Mount Brackets**

PART #	DESCRIPTION
20-5550	19" Rack Cable Mgmt. Wire Holder
20-5551	1U Hinged
20-5552	2U Hinged

**Cat 5e & Cat 6 Patch Panels**

PART #	DESCRIPTION
20-5502	Cat 5e, 12-Port Mini with 89D Mounting Bracket
20-5512	Cat 5e, 12 Port
20-5524	Cat 5e, 24 Port
20-5548	Cat 5e, 48 Port
20-5602	Cat 6, 12-Port Mini with 89D Mounting Bracket
20-5612	Cat 6, 12 Port
20-5624	Cat 6, 24 Port
20-5648	Cat 6, 48 Port



- Intertek ETL Semko verified and tested to Cat 5e and Cat 6 industry standards and certifications
- Third Party Testing (3P) verified and tested to Cat 5e and Cat 6 industry standards and certifications
- Meets or exceeds all published TIA/EIA-568-B guidelines for Cat 5e and Cat 6 requirements
- Designed and color coded for T586A and T586B wiring configurations
- 16 gauge steel, black painted panel with UL 94V-0 rated jack housing
- Designed to fit all standard 19" racks and cabinets

- All panels are RoHS compliant
- Meets FCC Part 68



- Super Flex Patch Cord Cable 4-pair 24AWG UTP
- UL listed and ETL verified to TIA/EIA-568B.2 standards
- Available in 3 colors: blue (BL), white (WH), yellow (YW)
- Available in 1ft, 3ft, 7ft, 10ft, 15ft, 25ft, 50ft lengths

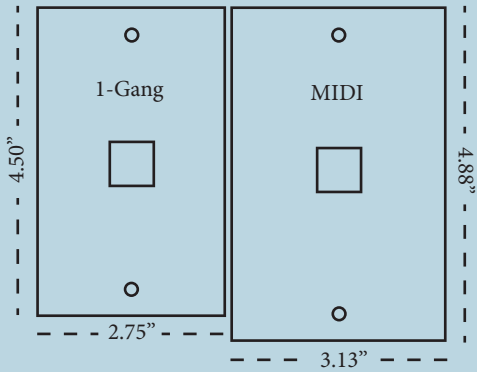
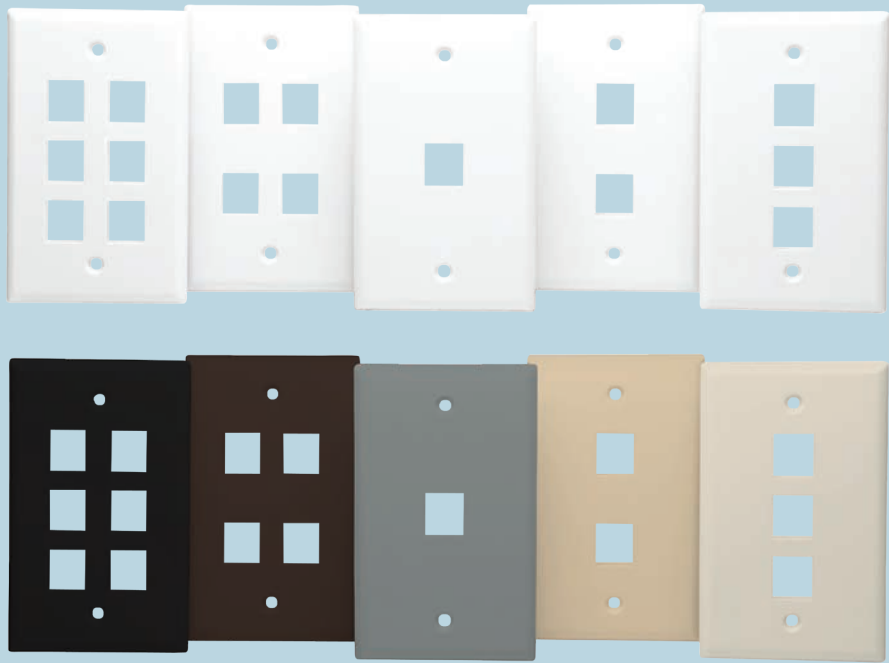
**Cat 5e & Cat 6 Patch Cords**

PART #	DESCRIPTION
20-6501-**	Cat 5e, 1 ft., Blue, White, Yellow
20-6503-**	Cat 5e, 3 ft., Blue, White, Yellow
20-6507-**	Cat 5e, 7 ft., Blue, White, Yellow
20-6515-**	Cat 5e, 15 ft., Blue, White, Yellow
20-6525-**	Cat 5e, 25 ft., Blue, White, Yellow
20-6550-**	Cat 5e, 50 ft., Blue, White, Yellow
20-6601-**	Cat 6, 1 ft., Blue, White, Yellow
20-6603-**	Cat 6, 3 ft., Blue, White, Yellow
20-6607-**	Cat 6, 7 ft., Blue, White, Yellow
20-6615-**	Cat 6, 15 ft., Blue, White, Yellow
20-6625-**	Cat 6, 25 ft., Blue, White, Yellow
20-6650-**	Cat 6, 50 ft., Blue, White, Yellow



**Keystone Wall Plates**

PART #	DESCRIPTION
20-3001-**	1-gang, 1-port, 7 colors
20-3002-**	1-gang, 2-ports, 7 colors
20-3003-**	1-gang, 3-ports, 7 colors
20-3004-**	1-gang, 4-ports, 7 colors
20-3006-**	1-gang, 6-ports, 7 colors
20-3011-**	MIDI, 1-port, 7 colors
20-3012-**	MIDI, 2-ports, 7 colors
20-3013-**	MIDI, 3-ports, 7 colors
20-3014-**	MIDI, 4-ports, 7 colors
20-3016-**	MIDI, 6-ports, 7 colors

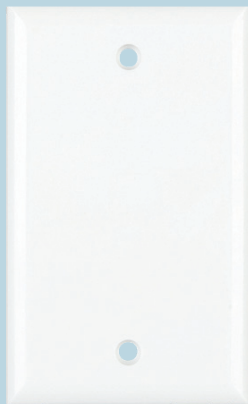


- Single Gang and Mid-Size (MIDI) available
- 1, 2, 3, 4, and 6-port available
- Designed to accept all DataComm Electronics keystone products
- Non-breakable ABS plastic
- Smooth finish to match electrical devices
- Available in 7 colors: Almond (AL), Black (BK), Brown (BR), Gray (GY), Ivory (IV), Lite Almond (LA), White (WH)

**Blank MIDI Wall Plates**

PART #	DESCRIPTION
22-0701	Ivory
22-0702	White
22-0703	Lite Almond

- Blank wall plate for covering outlet box not in use
- Fits a NEMA single gang box
- Available in 3 colors



**Surface Mount Box**

PART #	DESCRIPTION
22-0211	Ivory
22-0212	White
22-0215	Lite Almond

- RJ11
- 4 conductor
- Screw terminals for easy connection
- For baseboards or walls
- Available in 3 colors



**1 & 2 Port Surface Mounting Boxes**

PART #	DESCRIPTION
20-5311	1-Port, Ivory
20-5312	1-Port, White
20-5313	1-Port, Lite Almond
20-5321	2-Port, Ivory
20-5322	2-Port, White
20-5323	2-Port, Lite Almond

- Designed for voice grade, Cat 5e and Cat 6 jacks
- Available in 3 colors
- Available in 1-port and 2-port





**Keystone Decor Inserts**

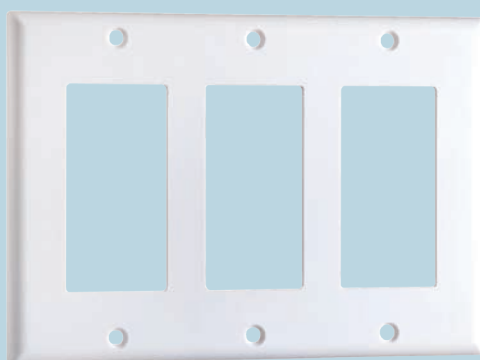
PART #	DESCRIPTION
20-5142	1-Port, White
20-5143	1-Port, Ivory
20-5145	1-Port, Lite Almond
20-5152	2-Port, White
20-5153	2-Port, Ivory
20-5155	2-Port, Lite Almond
20-5162	3-Port, White
20-5163	3-Port, Ivory
20-5165	3-Port, Lite Almond
20-5172	4-Port, White
20-5173	4-Port, Ivory
20-5175	4-Port, Lite Almond



- Use with any Decor style wall plate
- Fits a NEMA single gang box or low voltage mounting bracket
- Non-breakable ABS plastic

**Decor Wall Plates**

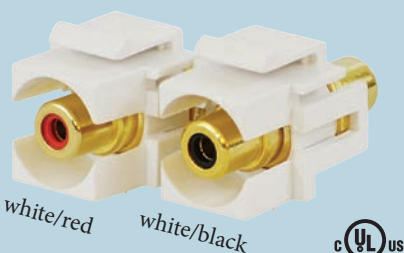
PART #	DESCRIPTION
20-5111	1-Gang, Ivory
20-5112	1-Gang, White
20-5115	1-Gang, Lite Almond
20-5121	2-Gang, Ivory
20-5122	2-Gang, White
20-5125	2-Gang, Lite Almond
20-5132	3-Gang White
20-5135	3-Gang, Lite Almond



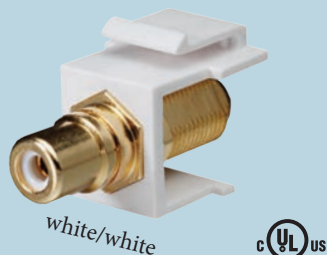
- Designed to accept DataComm Electronics decor Keystone Inserts
- Smooth finish to match electrical devices
- Non-breakable ABS plastic

**Keystone Insert Female RCA**

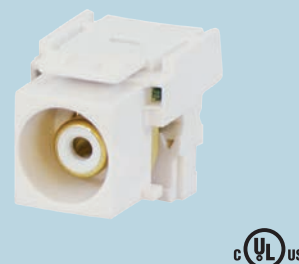
PART #	DESCRIPTION
20-3103-**/**	Available in 14 color combinations

**Keystone RCA to Female Connector**

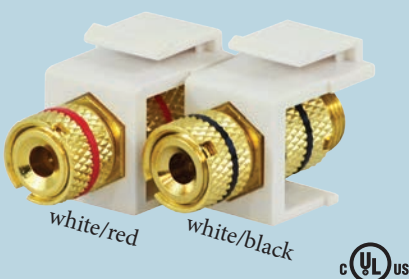
PART #	DESCRIPTION
20-3104-**/**	Available in 6 color combinations

**Keystone RCA to 110 Punch Down**

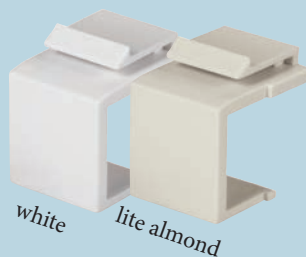
PART #	DESCRIPTION
20-3105-WH	White

**Keystone Insert Female Binding Post**

PART #	DESCRIPTION
20-3106-**/**	Available in 16 color combinations

**Blank Inserts**

PART #	DESCRIPTION
20-3101-**	AL, BR, IV, LA, WH

**HDMI Keystone Insert**

PART #	DESCRIPTION
20-4504-WH	White



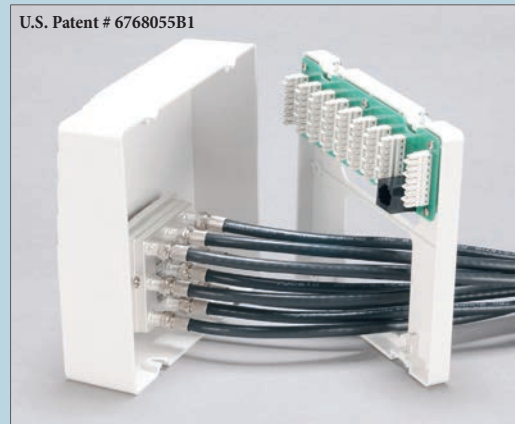
**Home Command Center II**

PART #	DESCRIPTION
70-0050	White

- Economical solution for both multi-family and single-family homes
- Up to 4 phone line inputs to 8 locations
- 1 video input and 8 video outputs
- Frequency response up to 1 GHz
- RJ45 test port
- Surface mount and convenient cutouts in the mounting plate to conceal cables from view and facilitate cable runs



U.S. Patent # 6768055B1

**110 Phone Plate with Video Distribution**

PART #	DESCRIPTION
70-0078	4-Gang, White

- Simple solution for termination phone and video in one location
- Up to 4 phone lines to 8 locations
- 6-way 1 GHz splitter
- RJ45 test port
- Mounts into a standard NEMA 4-gang box or 4-gang mounting bracket

**2-Gang 110 Phone Plate**

PART #	DESCRIPTION
70-0080	White

- Simple solution for terminating phone lines on jobs that don't involve structured wiring
- Up to 4 phone lines to 8 locations
- Mounts into a standard NEMA 2-gang box or 2-gang mounting bracket

**Phone Wall Plate**

PART #	DESCRIPTION
22-0011	Ivory
22-0012	White
22-0015	Lite Almond

- Available in 3 colors
- 4-position
- 4-conductor
- RJ-11

**Wall Plate Phone Jack**

PART #	DESCRIPTION
22-0104	Stainless Steel
22-0111	Ivory
22-0112	White
22-0115	Lite Almond

- Available in 4 colors
- 4-position
- 4-conductor
- RJ-11

