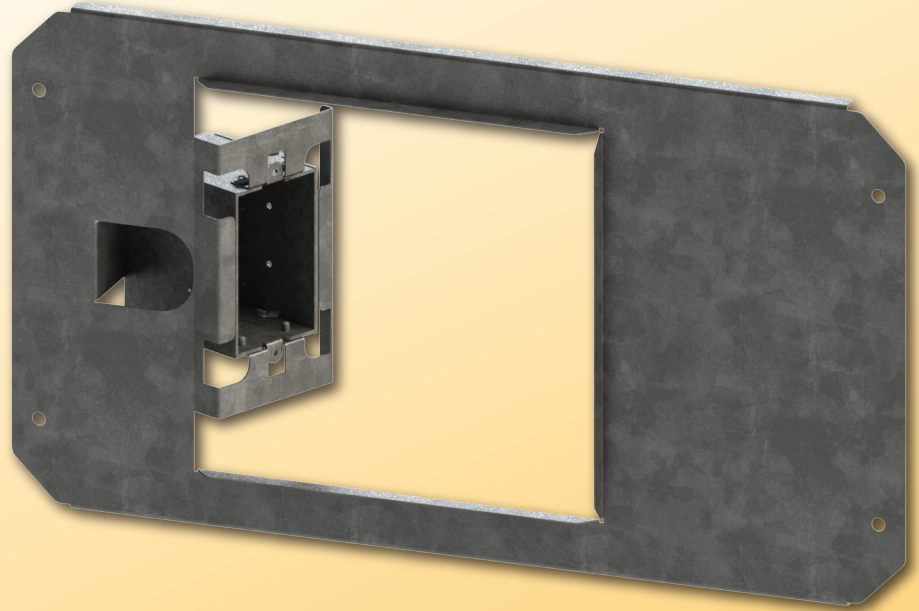


**DataComm Electronics'** Full-Size Rough-In Bracket is designed for use in new construction applications. The Rough-In Bracket allows for pre-wiring with many of DataComm's Low Voltage and Power Cable Plates. It works well for both residential and commercial applications.



### Features

- Sturdy 22GA Galvanized Steel Construction
- Designed to be installed onto standard 16 inch on center metal or wood studs
- Steel Outlet Box\* included:
  - 2 ¾" Single Gang
  - Contains 8 knockouts for conduit or armored cable mounting options
- Built-in mud ring for drywall
- Works well for both residential (15A) and commercial (20A) applications
- Reversible for receptacle placement on left or right side
- Low profile design fits behind the industry's thinnest mounts, TV's and other wall mounted displays
- Conceal multiple A/V cables behind your HDTV or other display unit
- Quick and easy to install

### Final Installation with Compatible Wall Plate (Part# 45-0032-WH)



### COMPATIBLE WALL PLATES

Use the Full-Size Rough-In Bracket in conjunction with the Recessed Low Voltage Media Plate:

- with Duplex Receptacle, Part #45-0031-WH
- with Duplex Surge Suppressor, Part # 45-0041-WH
- with 20 Amp Duplex Receptacle, Part #45-0032-WH

And the Expandable Media Box:

- with Duplex Receptacle, Part #45-0051-WH
- with Duplex Surge Suppressor, Part # 45-0061-WH
- with 20 Amp Duplex Receptacle, Part #45-0052-WH

Part Number	Description	Min. Order/Master Ctn.
45-0102	Full-Size Rough-In Bracket	4/4